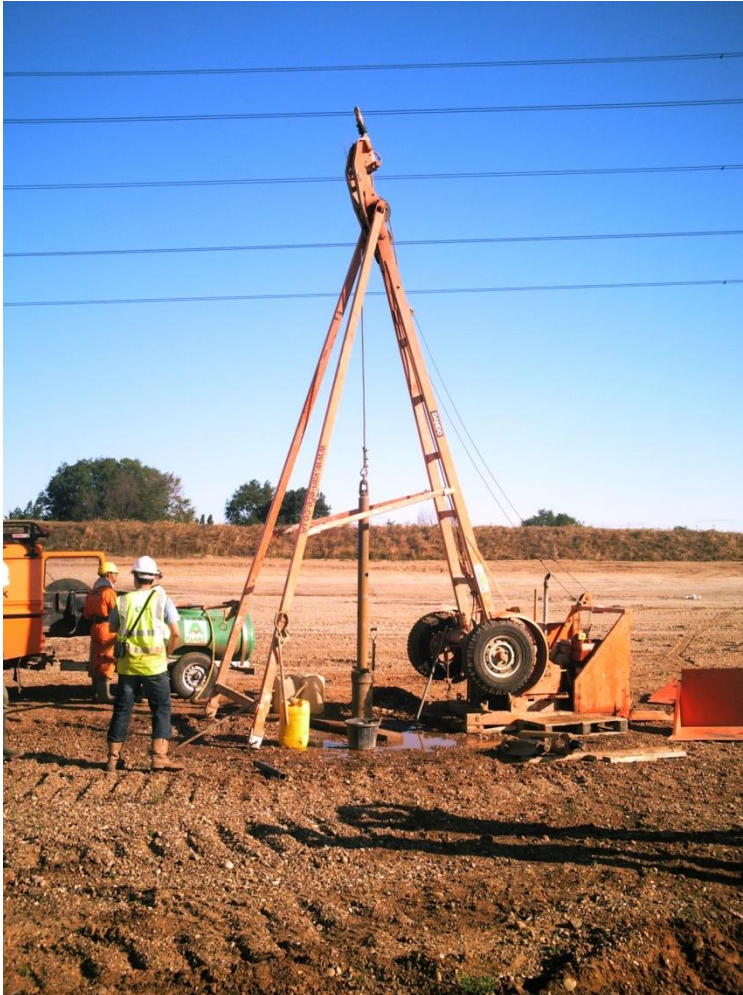


Dando 3000 Rig

Restricted Access Cable Percussion Rig



Operating Height	m	5.2-6.65
Operating Width	m	2.072
Transport Length	m	8.5
Transport Height	m	1.38
Transport Width	m	1.8
Weight	ton	2.1
Borehole Depth	m	60+
Borehole Diameter	mm	150-300

The Dando 3000 is ideally suited for deep Site Investigation & well drilling up to 60m depth using 6" to 12" diameter casing.

Also suited for the precise installation of ground water/ground gas monitoring wells and geotechnical instrumentation.

Towed to site by Landrover and operated with a two man crew. Typical production rates are 8 to 15m per day dependant upon ground conditions.