

Quarterly Values Awards

More than 120 members of our team joined the latest Town Hall Meeting (11th June), for business updates from across the divisions and to celebrate our Quarterly Values Award winners.



SAFETY: - Winner - David Pond
Highly Commended - Tom Widdowson, Specialist Piling.



INTEGRITY: - Winner Jane Corton, Specialist Piling
Highly Commended - James Norman, Rail and Haydn Payne, Strata.



TEAMWORK: - Winner Bret Topley, Transport
Highly Commended - Craig Severn, General Piling.



EXCELLENCE: - Winners Alan Jones, Housing and Drill & Grouting Team
- Steve Bray, Dave Bourne, Stuart Forsyth, Conor White & William Seage, Specialist Piling. Highly Commended - Jon Collishaw, Rail.

Kirkby Yard Improvements

The new Weld Shop installation at our Kirkby headquarters is well underway, with the frame already erected and the floor slab currently being prepared. The work should be completed in August, when our welding team will move from their current space in Pinxton.

Darren Senior and the team in the Yard have also been busy relocating the vehicle brake tester and expanding the rig maintenance area for Specialist Piling, clearing the back of the beam factory to allow parking of rigid lorries and have established a dedicated space to the side of the beam factory to allow safe access for strapping down of trailers.



Safety Improvement Plan reinforces company culture

As part of our 16-point Safety Improvement Plan, an independent review of our safety processes and culture by external consultants Lockton, has been completed.

The findings have been consolidated, along with Investors in People survey feedback and our external annual ISO audit, and are currently being drawn up into a single action plan for delivery.

The HR team have also re-launched the corporate and local induction process, which will help new starters to become familiar with our organisation, our culture and our values, as well as helping people settle in quickly and become productive members of the team.

**Think Safe
Act Safe**



Multi division collaboration on M27 SMP

On the flagship M27 Smart Motorway project junctions 4 to 11 for the BAM Nuttall and Morgan Sindall Joint Venture, we brought together disciplines from four Van Elle divisions in a great example of the integrated solutions we can offer to our key customers, on complex infrastructure projects.

Along the 13.9-mile section of busy motorway, we safely delivered ground investigation by Strata Geotechnics, installation of gantry piles by the Piling and Specialist Piling teams and smaller CHS foundations by the Rail division using their Colmar RRV's.

As well as the divisions receiving the Collaboration Award, Tom Widdowson, Nathan Spence, Matt Phillips, Gary Baxter and Mark Boyd were all recognised for individual awards during our annual People Awards last Christmas.



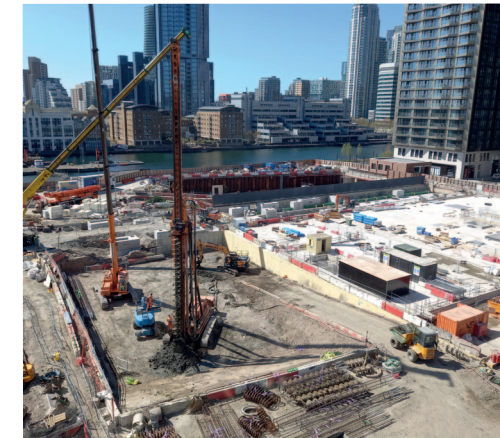
Smartfoot foundations adapted for modular housing development

With the industry increasingly moving to modern methods of construction, the Housing division have adapted the Smartfoot system and installed 433m of modified beams within a 2.5mm tolerances.

The Boxwood Park project in Hoddesdon, called for the installation of foundations for 12 new modular homes, for Woolens Brook Developments.

As the project had to comply with BIM Level 2, 3D models were developed to ensure the bespoke Smartfoot design, for each individual plot, met the tight specification required for the modular units and new moulds were developed to improve casting tolerances in our Kirkby factory.

To support the Smartfoot beams, 108 continuous flight auger piles were installed to depths of up to 20.5m.



Record depths reached in Canary Wharf

The mixed-use Wood Wharf development at Canary Wharf, will provide up to 3,600 new homes, two million sq ft of office space, 350,000 sq ft of retail space and over nine acres of public spaces, squares and parks when completed.

Our CFA piles, 30+ metres, are apparently the deepest to be installed in the 30 years of the Canary Wharf development and our Llamada P160 installed all piles in a single stroke, without the need for the use of a Kelly bar extension or supplementary means of achieving depth.

In addition, we used the new PRAD pile installation and monitoring system to achieve high quality pile records and eliminate pile clashes with underground structures. We successfully installed 79 piles, not only adjacent to but also in between two live running Jubilee Line tunnels (approx. 20-25m depth to the tunnel crowns), without incident.

Malcolm O'Sullivan, Piling Director said: "Despite the technical challenges on this project, I'm delighted that the team have achieved record-breaking depths, without incident and within 14 weeks of a 16-week programme."



Welcome Colin Williams, Head of HSQE

Joining the executive team is newly appointed Head of HSQE, Colin Williams, who will work closely with all divisions and operational leaders as we implement improvements and continue to build an empowered culture in line with an updated set of Safety Golden Rules.

Colin is a recognised industry leader; with 32 years experience in the piling and construction sectors and more than 20 years in the management of health, safety and environmental systems and teams.

He joins us from the HS2 project where he led the HSQE teams.

Welcome to the team Colin.



Championing Women in Engineering

On 23rd June, we highlighted the women who make Van Elle a successful business and a great place to work, as we celebrated International Women in Engineering Day.

Some got involved in our Q&A piece for the website, while others joined us for a panel discussion, outlining their career, the challenges they had experienced within the industry and their opinions for attracting, retaining and promoting more women the future.

Thank you to every who got involved and supported the campaign.

Innovative e-Learning platform launch



Our Training and Assessment team are improving the way we deliver our internal training by launching an e-Learning platform.

The system launched on 11th June, and Paul Dobson, Training and Assessment Manager, said: "The new platform will help us maintain an engaged and competent workforce who work safely and professionally for the benefit our clients."

Natural fault overcome in Pontefract

Our Piling team are on course to successfully install more than 7,000 piles at a Pontefract site where a 770,000 ft2 (71,500 m2) Next distribution warehouse will be erected.

Ground conditions encountered are highly variable, drilling through sandstone, mudstone and even bands of coal due to a natural fault running through the site.

Continuous Flight Auger (CFA) piles up to 400mm diameter are currently being installed, with an average installation rate of 130 piles a day and an outperform production of 190 piles achieved in one day.

Well done to the 24-strong team who are working on this project, but in particular Sean Gothard and Mick Dillian.

