

GROUNDNED

News and updates from Van Elle | June 2023 | comms@van-elle.co.uk | 01773 580 580



First Rigid Inclusion rig purchased as Ground Improvement work expands

We recently took delivery of our first owned Rigid Inclusion rig. The new addition to our fleet is a step forward as we expand our Ground Improvement offering across the county.

The Bauer RTG RG19T telescopic leader rig from AGD Ltd is equipped with a MR150AVM vibro with ACS system. Including a MB100 rotary head with ACS system, 5.5-ton service winch, and a Cat C18 750 hp engine tier 4i.

The versatile rig is suitable for installing rigid inclusions, vibro stone columns, sheet-piling, CFA piling and more.

The rig made its way to its first project in Bakewell, where our team installed 320mm diameter rigid inclusions to support the foundations for an office unit.



Van Elle team wears rainbow-striped laces to support the LGBTQ+ community

Sports enthusiasts may be familiar with the Rainbow Laces campaign, promoted by Stonewall.

The campaign encourages participants to do something active while wearing rainbow laces in their boots or trainers, to show their support for LGBTQ+ equality.

At Van Elle, we believe this campaign should extend beyond sports. Therefore, during Pride Month our Ground Improvement team proudly wore rainbow laces on-site, encouraging important discussions.

As a company, our goal is to have a business that is wholly welcoming, inclusive and supportive of lesbian, gay, bisexual, transgender + other related communities.

Throughout the month of June, we encouraged our employees to wear rainbow laces, badges and dress brightly to show their support.



Celebrating International Women in Engineering



International Women in Engineering Day took place on the 23rd June and aims to raise the profile and celebrate the achievements of women in engineering. As well as encourage more people to consider engineering as a profession.

In honour of this campaign Shannon Wade, Geotechnical Engineer shared a glimpse into her typical week at Van Elle to give people an idea of what it's like to work in our industry.



Van Elle hosts Sustainability Open Day

In July we hosted our first sustainability open day at our Training Centre in Kirkby in Ashfield.

Over 30 industry-leading suppliers gathered at the event to discuss and demonstrate latest advancements and innovations.

The focus was on the entire life cycle of products, plant, equipment and sustainability goals to reduce green house gas emissions.

Over 150 people attended the event which showcased presentations and live demonstrations of products and processes.

There were also discussions about new developments and innovations that will be available to us and our customers in the near future.

We discussed our own sustainability journey so far. As well as the positive steps we are taking to ensure our equipment and processes always look to reduce waste, greenhouse gas emissions, and minimise any negative impact on the environment.

The day helped to promote the conversation about what must be done to achieve a sustainable future for all.

Matt Love, Chair of the Van Elle Sustainability Working Group said: "Coming together to discuss sustainability challenges with our supply chain is an essential part of our collective journey towards Net Zero. It was inspiring to see so many individuals share their innovative ideas, products, and processes."

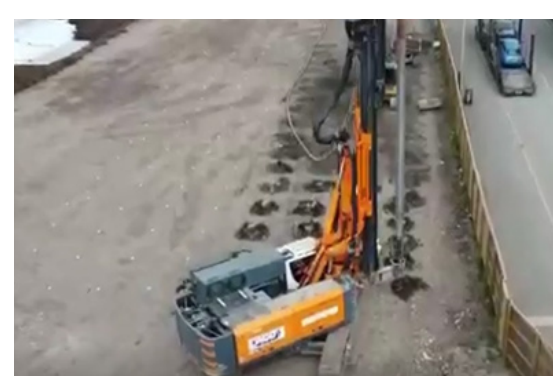
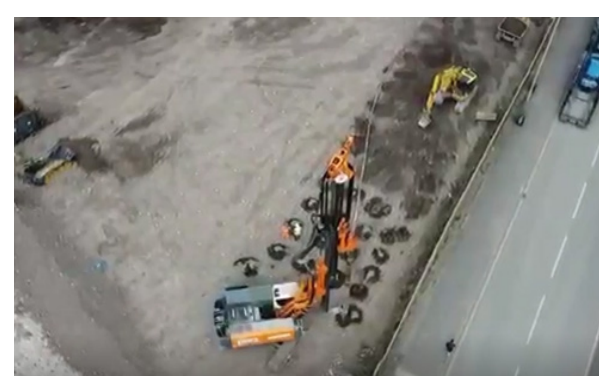


Ground Improvement completed works on the Vauxhall Industrial Estate

Our Ground Improvement team recently completed works to support the 206,000 sq. ft redevelopment of Vauxhall Industrial Estate, for client Hargreaves Contracting.

The project located in Stockport, involved the installation of over 2842 No. 300-320mm diameter Rigid Inclusions up to 10m depths.

There are 6 no. industrial units being built consisting of pad foundations and a ground bearing floor slab which have been supported by our rigid inclusion system.



Van Elle Canada journey begins with arrival of RRV's and exhibition at TRACCS rail day

We are delighted to announce that Van Elle Canada has now officially launched. The first of Canada's RRV's have arrived by ship in Halifax, Nova Scotia and are due to commence works for our new clients in Ontario in July.

We also attended the TRACCS Rail Day at The International Centre, Mississauga where the RA310 and Colmar T10,000 FS were displayed for our first industry event in Canada.

There were over 100 exhibitors at the event, bringing together many industry professionals for those all important conversations.



Dawlish sea wall reopens following all-important coastal defence upgrade work

Our Specialist Piling team had the honour of attending the opening of the second section of the Dawlish sea wall, following our involvement in delivering this important project.

In 2014, a part of the sea wall and railway line collapsed during storms. To help safeguard the crucial railway link connecting the Southwest to the rest of the UK and avoid similar damage in the future. An investment of £80 million was made.

Our Specialist Piling team played a vital role in the project. They worked in partnership with BAM Nuttall and Network Rail, to support the all-important coastal defence upgrade work.

This included the installation of piles for various structures along the seafront and station from Coastguards to Colonnade.



Rail team complete works on the Port Talbot West Two scheme

Our Rail team were involved in the removal and installation of new signalling gantries and masts on the Port Talbot West Two scheme.

On behalf of AJ Services Eng Ltd, our teams utilised two of our Colmar T10000 FSCG to carry out the main lifts.

With a gross vehicle weight of 42 tonnes, our innovative Colmar T10000 FSCG provides excellent stability and lifting capacities. It also has an 80-tonne train weight and lift and carry capacity.



Strata Geotechnics take delivery of new Comacchio GEO 205

Earlier this month our Strata team took delivery of a brand new Comacchio GEO 205

This is a small track-mounted, versatile rotary drilling rig capable of completing a wide range of ground investigations and a variety of drilling techniques.

The FX25 Hydraulic Percussive hammer can obtain dynamic samples from soft overburden and superfcials, providing very high quality samples.

