

GROUNDNED

News and updates from Van Elle | June 2024 | comms@van-elle.co.uk | 01773 580 580



Specialist Piling Complete King Post Retaining Wall

Our Specialist Piling division has completed the installation of a king post retaining wall at the NEAR M1 J33 site.

Contracted by Costain Group PLC as part of the National Highways M1 National Emergency Area RetroFit scheme, we installed 130m of king post wall to support the construction of a new Emergency Refuge Area.

The project involved installing 65No. piles, each measuring 900mm in diameter and spanning between 7 to 9.5m in depth with beam heights between 10m and 12.5m.

In addition to the piling work, our team managed all associated earthworks, panel installations and logistics, ensuring comprehensive project delivery in a confined working area next to the live motorway.

Despite obstacles such as restricted access and navigating overhead services, our dedicated team completed the project to programme.



Spotlight on Our Women in Engineering

In honour of International Women in Engineering Day, a campaign dedicated to celebrating the remarkable contributions women make in engineering, we spoke to some of the incredible women working in various divisions of our business.

Shannon Wade (Geotechnical Engineer in Strata), Lucy Jackson (Graduate Geotechnical Engineer in Strata), Kezia Agulanna (Graduate Engineer in Rail) and Eugenia Polo Pascual (Senior Design Engineer in Housing) discussed key projects they've worked on, their inspirations, challenges, day-to-day experiences, hopes for the future and inspiring the next generation of engineers.

As a business, we are committed to inspiring future generations and promoting diversity. We take pride in breaking down gender stereotypes and empowering women to achieve their ambitions and goals.

You can read the inspiring stories of Shannon, Lucy, Kezia and Eugenia on our website.



Pinxton FC Promoted to The United Counties League Division One

As proud sponsors of Pinxton FC, our local football club, we were delighted to see them promoted to The United Counties League Division One after winning the Central Midlands League title.

The team played 32 games, winning 24, drawing 2, and losing 6, with 17 clean sheets throughout the season.

We are honoured to be a part of their journey and cannot wait to continue supporting them in this exciting new chapter.



Wear it Green Day: Supporting Mental Health Awareness Week

In May, Our team wore green attire to raise awareness and demonstrate our commitment to mental health initiatives.

Wearing green symbolises our support for open discussion and prioritisation of mental health in the workplace, serving as a visible reminder of our commitment to fostering a supportive environment.

By standing together in green, we promote important conversations and help break the stigma surrounding mental health.



Completion of UK's Largest Indoor Helical Piling Project

Our ScrewFast division achieved a major milestone by completing the UK's largest indoor helical piling project for the Green Mountain expansion at LON1-East, Romford.

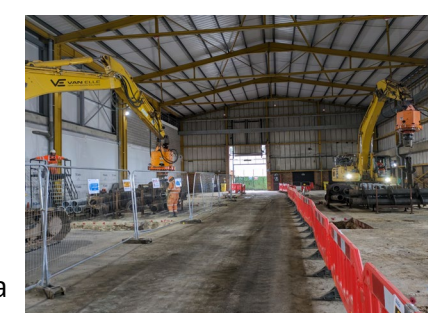
This builds on the success of previous helical piling in the original building, with the client valuing minimal disruption, wet works, and vibration disturbances.

The project involved installing 301 helical piles across two data centre buildings, designed to withstand compression loads up to 500kN.

The piles had a diameter of 273mm, and a wall thickness of 10mm, reaching depths of 10 to 13m.

Preliminary testing confirmed pile capacity in site-specific soils, allowing design adaptations and efficiencies.

The team used two 35-tonne excavators and two 250 kNm torque heads, navigating height and weight restrictions to perform precise installations in a live data centre environment.



Record depth Achieved at Britannia Phase 2B

We achieved a significant milestone at the Britannia Phase 2B project in Hackney, London, setting a new depth record for Continuous Flight Auger (CFA) undertaken by our company.

The project involved installing 190No. CFA piles to support a new residential-led regeneration scheme near Shoreditch Park.

The undertaking involved a daily installation of up to 200m³ of concrete, utilising our Llamada 160-TA.

Notably, the project required careful navigation of the intricacies associated with piling in close proximity to the future Crossrail tunnel and Thames Water service.



Stoke Road Slope Stabilisation Project

Our Specialist Piling team successfully concluded the Stoke Road Slope Stabilisation project for PGR Construction Ltd in Blisworth, Northamptonshire.

The project involved the installation of 431No. soil nails, with 323No. at 9.5m and 108No. at 3.5m depths, along with PVC double twist rockfall protection netting and coir mat underlay.

To complete the work, our team utilised our new Ripamonti EX321 drill mast, mounted on a CAT320 excavator.

Despite facing several challenges, including restricted access due to a full road closure, strict requirements for temporary works design, the proximity of residential properties within 15 meters of the work site, and coordinating with ongoing road workers, the project was completed on programme.



Malcolm O'Sullivan Appointed Chair of Federation of Piling Specialists

Malcolm officially took on this prestigious role on 16th May 2024, succeeding the successful tenure of John Chick.

With over 20 years of experience in ground engineering and deep foundation construction, Malcolm brings a wealth of knowledge and expertise to the FPS.

His leadership will drive forward the FPS's core values, emphasising safety, sustainability, diversity, and inclusivity.

Malcolm's vision aligns perfectly with FPS's commitment to industry improvement through collaboration and high standards.

We are incredibly proud of Malcolm's achievement and look forward to the positive impact he will make in his new role as Chair of the Federation of Piling Specialists.



Rail Complete Sheet Piling Works at West Sutton Station

The Rail team completed sheet piling and earthworks at West Sutton Station, stabilising the failing embankment with 31 meters of sheet piles.

The project required the installation of 52No. piles, each reaching a depth of 5.5 meters using vibratory side grip and back driving techniques.

Following the installation of the sheet piles, the rail team utilised the Colmar T10,000 RRVs to carry out basic earthworks in front of the installed sheet pile wall.



Strata Supports the Rebuild of Ashwood Church

Strata Geotechnics recently completed ground investigation work at Ashwood Church in Kirkby-in-Ashfield to help demolish and rebuild a new multipurpose building.

The ground investigation aimed to mitigate geotechnical and environmental risks and included a phase 1 desk study report, five windowless sample boreholes, standard penetration testing, hand shear vane testing, environmental and geotechnical laboratory testing, and interpretative reporting.

Despite working in an active car park, the team successfully segregated their work from the public.

